



AUSTRALIAN NATIONAL
BOTANIC GARDENS



Alive with the future

Australian National Botanic Gardens MASTER PLAN OVERVIEW a snapshot of future opportunities

Message from the Executive Director



Vision: Australians value, conserve and appreciate our rich plant heritage

Mission: To inspire, inform and connect people to the Australian Flora

Towards the future: Inspiration, Conservation, Education and Recreation

Over the past four decades the Australian National Botanic Gardens has developed into a world class botanic garden, national institution and popular visitor destination. The Gardens tell the national story of Australia's unique flora, showcasing native plants from all regions of Australia and featuring many rare and threatened species. The Gardens are at the forefront of scientific research playing an important role in conserving and preserving our native species.

As we approach the Gardens' 50th anniversary in 2020, we need to plan for the future and identify opportunities to develop the Gardens' infrastructure and enhance the features of this vibrant living collection.

The Master Plan provides the framework for the Gardens' projected infrastructure to support enhanced visitor experiences, horticulture and research capabilities over the next 20 years. This long-term vision will ensure that the Gardens remain at the forefront of contemporary gardens world-wide.

Key features of the Master Plan include: a new National Seed Bank to help conserve our native flora; a Conservatory to display tropical plants from northern Australia and our Islands; a new Visitor Centre and Cafe; and Children's Nature Play Terrace. It also incorporates plans to develop ecotourism activities in the bushland precinct.

I would like to thank the Master Plan design team comprising architects Tonkin

Zulaikha Greer and landscape architects Taylor Cullity Lethlean who have worked with us to achieve a plan that incorporates high quality design with a functional approach.

I also extend my thanks to the many people who provided input into the Master Plan; including the significant contribution from the Friends of the Gardens.

To bring the Master Plan to fruition we will be establishing a range of fundraising campaigns supported by capital funding from Parks Australia.

The completed Master Plan provides creative and sustainable directions for the Australian National Botanic Gardens that will greatly improve a most valuable national and cultural asset. Fulfilment of this plan will ensure the Gardens continue to grow as an outstanding botanic garden for the benefit of generations to come.

Dr Judy West AO
Executive Director

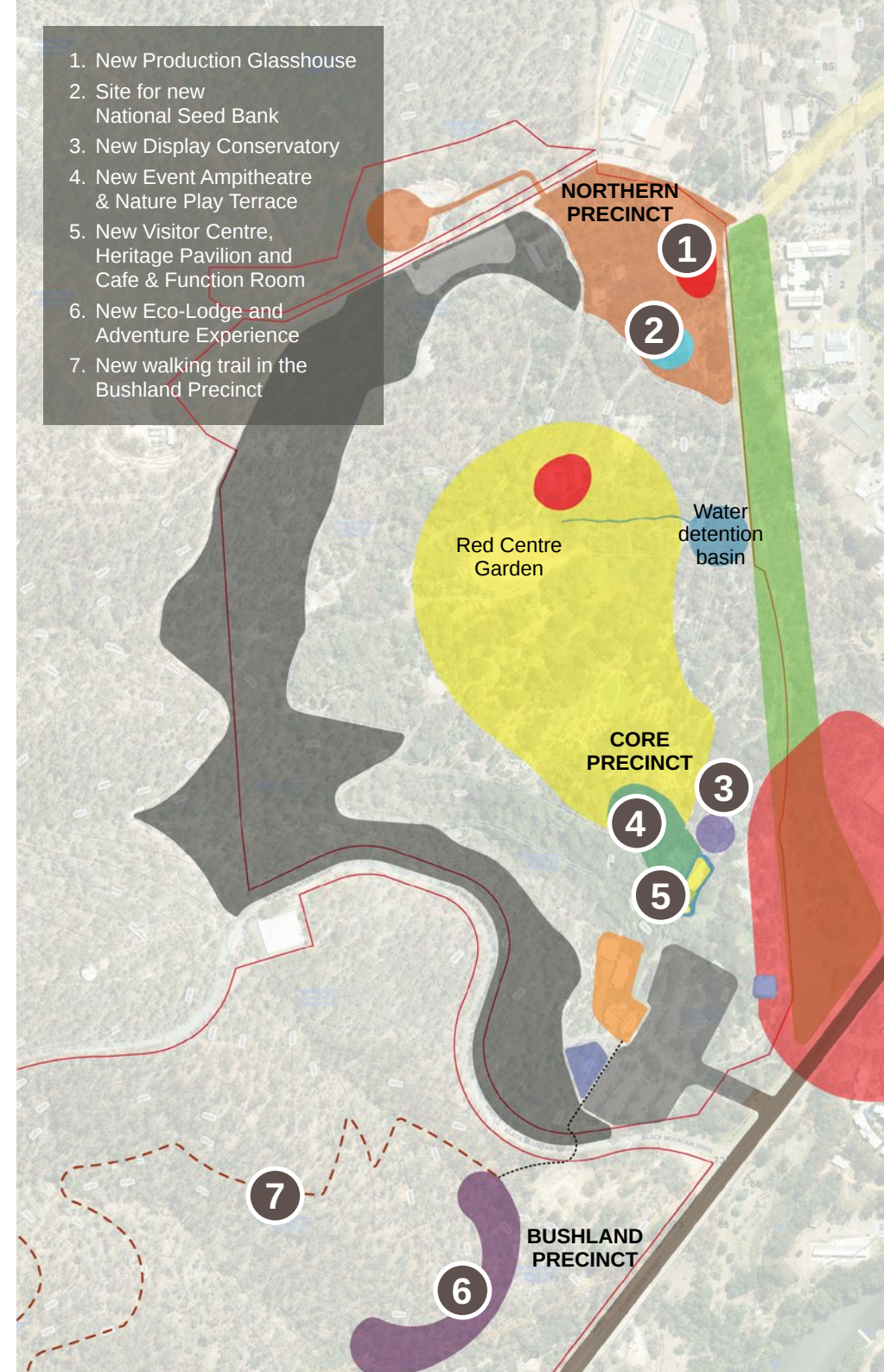
Master Plan design approach

A key objective of the Master Plan is to develop plans for new infrastructure and other attractions to support the growth of the Gardens' visitor experiences, educational and recreational opportunities without impacting on the precious living collection.

Core Precinct: aims of this area focus on welcoming visitors enabling them to quickly orientate themselves and plan their visit. Emphasis has been placed on developing a central hub featuring the Visitor Centre, Cafe and Function Centre, and Nature Play Terrace.

Northern Precinct: to be consolidated into a new integrated service zone, including the new National Seed Bank.

Bushland Precinct: this zone will focus on ecotourism and a treetop adventure course, utilising the bushland setting.



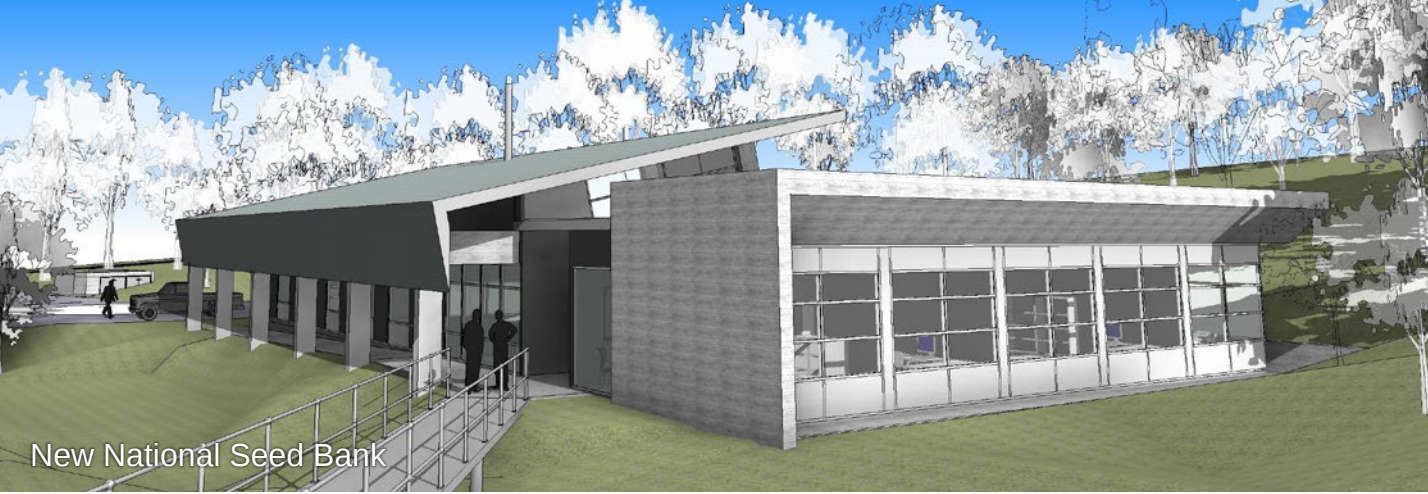
Enhancing the Gardens' character



The Master Plan enhances the character of the Gardens, integrating the existing landscape with the built environment.

A key objective of the plan is to deliver increased horticultural and research capabilities such as the new National Seed Bank – a world class facility commensurate with the Gardens' international best practice in seed banking, reflecting the critical importance of the work that is undertaken there. It will also help connect the public to the importance of seed conservation with this new facility enabling 'behind the scene' tours.

Horticultural maintenance facilities will be relocated to the northern edge of the site to maximise the visitor experience in the core precinct.



Memorable experiences and destinations



Image courtesy of the Botanic Gardens and Parks Authority, JD Arcy

Nature Play Terrace

The Master Plan will create new memorable experiences and visitor destinations such as the Nature Play Terrace, situated in the core precinct, attracting families and engaging children in educational and adventurous play.

The rainforest gully will have increased accessibility through a new fully integrated boardwalk.

A new Conservatory will be constructed near the Visitor Centre, which through its outstanding architectural design will become an iconic feature of the Gardens. It will display plants from Australia's tropics as well as threatened species, and providing spaces for educational and visitor experiences.

A planned program of public art will be integrated into the landscape to add layers of meaning and content for visitors.



New Conservatory

A dynamic and active core precinct



The Master Plan will create a dynamic and active heart through a core precinct comprising a new Visitor Centre, Cafe and Function room.

A new Event Amphitheatre and wedding garden will be developed beside the rainforest with excellent access to catering, pathways and parking. Nearby will be the Nature Play Terrace for children, encouraging active imagination and play.



New Visitor Centre



- 1. New Visitor Information Centre
- 2. Nature Play Terrace
- 3. New Wedding Garden
- 4. New Event Amphitheatre
- 5. New Conservatory
- 6. New Cafe and Function room



Nature Play Terrace

© iStock

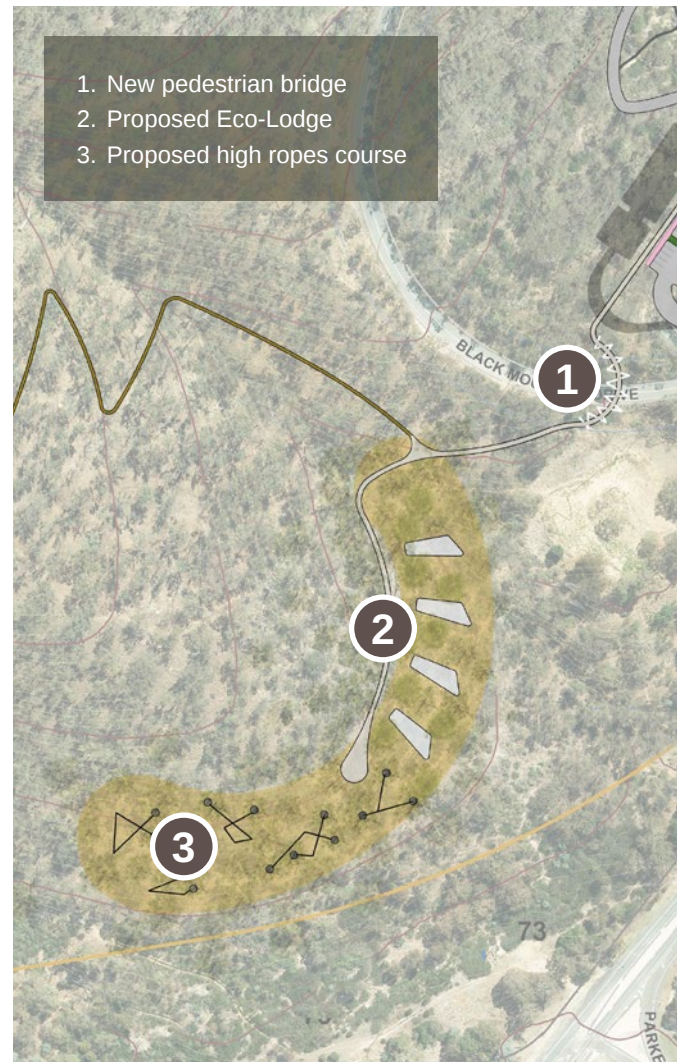


New Wedding Garden

Connecting the precinct

A new gateway entry experience and cross campus connections with CSIRO and The Australian National University are integral features of the Master Plan.

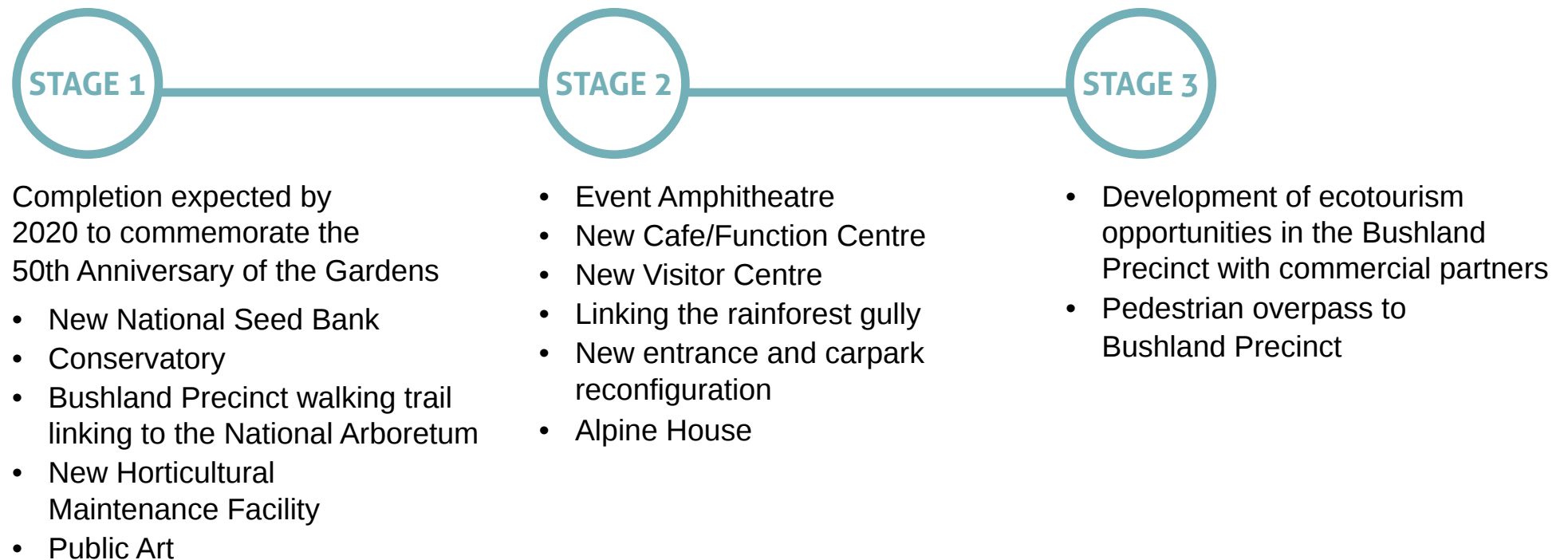
An environmentally-sensitive range of visitor facilities is proposed for the Bushland Precinct including a walking trail to the National Arboretum, a treetop adventure course and Eco-Lodge.



Implementation overview



The Master Plan will be implemented over a 20 year period, or sooner if funding becomes available, with many projects planned to be undertaken in the next five years. The outcome of the Master Plan will benefit all Australians now and into the future preserving, conserving and displaying Australia's native flora.



The full Master Plan can be downloaded at
www.nationalbotanicgardens.gov.au

tonkinzulaikhagreer ARCHITECTS

www.tzg.com.au

T.C.L

www.tcl.net.au

Clunies Ross Street, Acton ACT 2601
02 6250 9588 | info@anbg.gov.au

 twitter.com/anbg  Facebook

www.nationalbotanicgardens.gov.au



Australian Government
Director of National Parks